

# For Lease

30 Town Center Parkway  
Santee, CA 92071



Prime Retail/Office Space Available For Lease.  
From 996 sf to the Entire 7,955 sf Building.

## Retail / Office

**SUITE A: 5,771 SF AVAILABLE NOW**

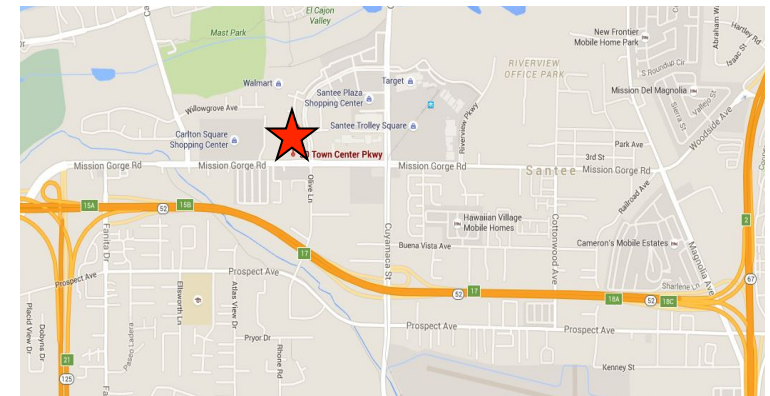
Improved office build-out, flexible layout for retail/office users

**SUITE B: 1,188 SF AVAILABLE 60 DAYS**

**SUITE C: 996 SF AVAILABLE 60 DAYS**

**NEGOTIABLE RATE + NNN**

- Position your business alongside Chase Bank on the main thoroughfare in Santee
- Enjoy prominent location footsteps from superior retail anchors such as Costco, Lowe's, Home Depot, Best Buy and more!
- Convenient access from the SR-52, SR-67 and SR-125 freeways



For more information, please contact:

**Rich Lee**  
Senior Vice President  
Lic. #01389755  
T: (858) 200-4265  
rlee@cfisandiego.com

**Mike Paeske**  
Executive Vice President  
Lic. #01422680  
T: (858) 200-4264  
mikep@cfisandiego.com

**CFI**

Lic. #00288311  
10951 Sorrento Valley Rd, 2A  
San Diego, CA 92121  
cfisandiego.com

The depiction in the included photograph of any person, entity, sign, logo or property, other than Commercial Facilities Incorporated's (CFI) client and the property offered by CFI, is incidental only, and is not intended to connote any affiliation, connection, association, sponsorship or approval by or between that which is incidentally depicted as CFI or its client. This listing shall not be deemed an offer to lease, sublease or sell such property; and, in the event of any transaction for such property, no commission shall be earned by or payable to any cooperating broker except if otherwise provided pursuant to the express terms, rates and conditions of CFI's agreement with its principal, if, as and when such commission (if any) is actually received from such principal.

# For Lease

30 Town Center Parkway  
Santee, CA 92071



# For Lease

30 Town Center Parkway  
Santee, CA 92071



commercial  
facilities  
incorporated

Suite C 996 SF Available 60 days	Suite B 1,188 SF Available 60 days
<b>Suite A 5,771 SF AVAILABLE</b>	



## Contiguous Space Available

- Several options ranging from 996 SF to 7,955 SF

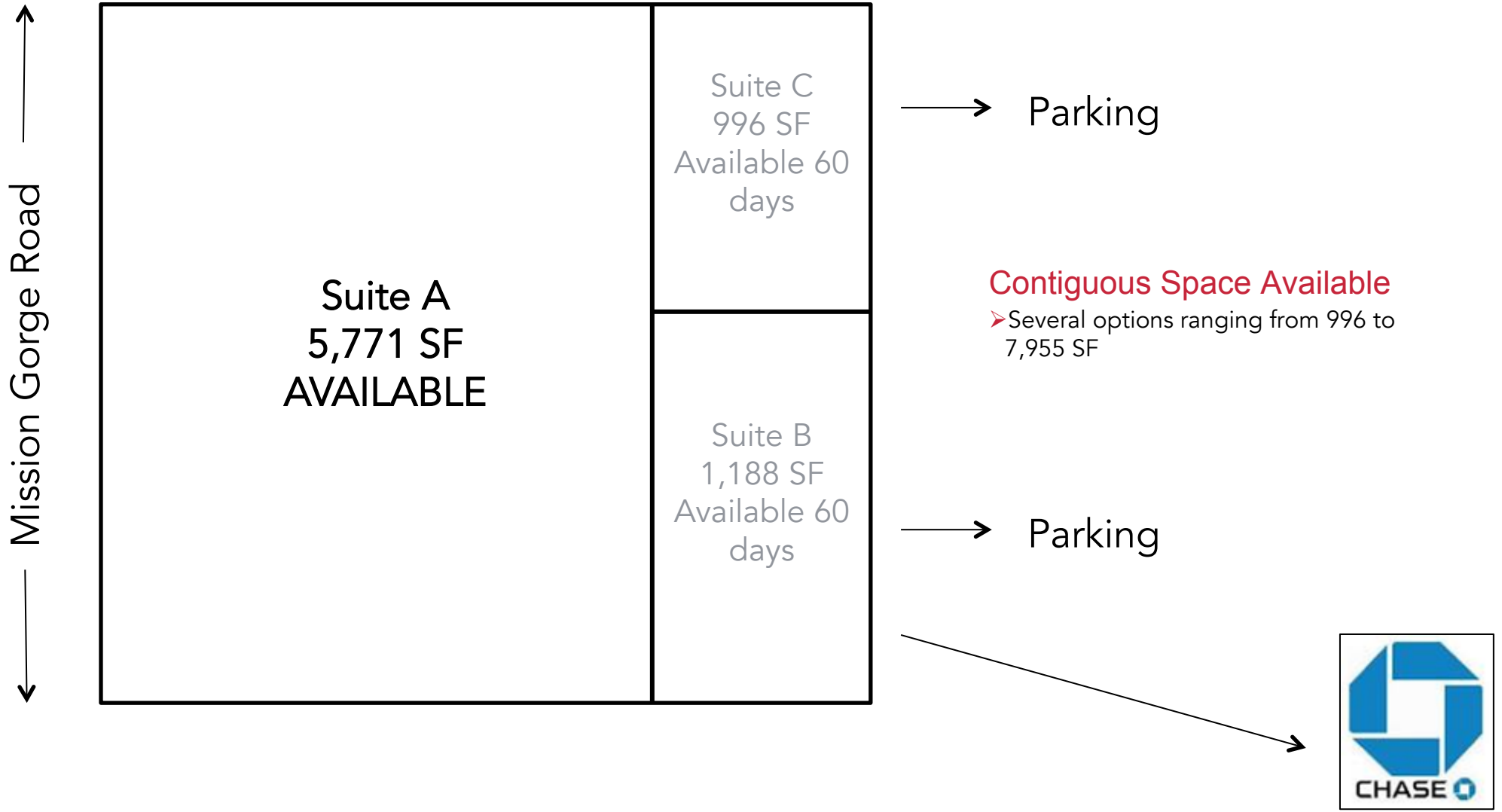
The depiction in the included photograph of any person, entity, sign, logo or property, other than Commercial Facilities Incorporated's (CFI) client and the property offered by CFI, is incidental only, and is not intended to connote any affiliation, connection, association, sponsorship or approval by or between that which is incidentally depicted as CFI or its client. This listing shall not be deemed an offer to lease, sublease or sell such property; and, in the event of any transaction for such property, no commission shall be earned by or payable to any cooperating broker except if otherwise provided pursuant to the express terms, rates and conditions of CFI's agreement with its principal, if, as and when such commission (if any) is actually received from such principal.

# For Lease

30 Town Center Parkway  
Santee, CA 92071



commercial  
facilities  
incorporated

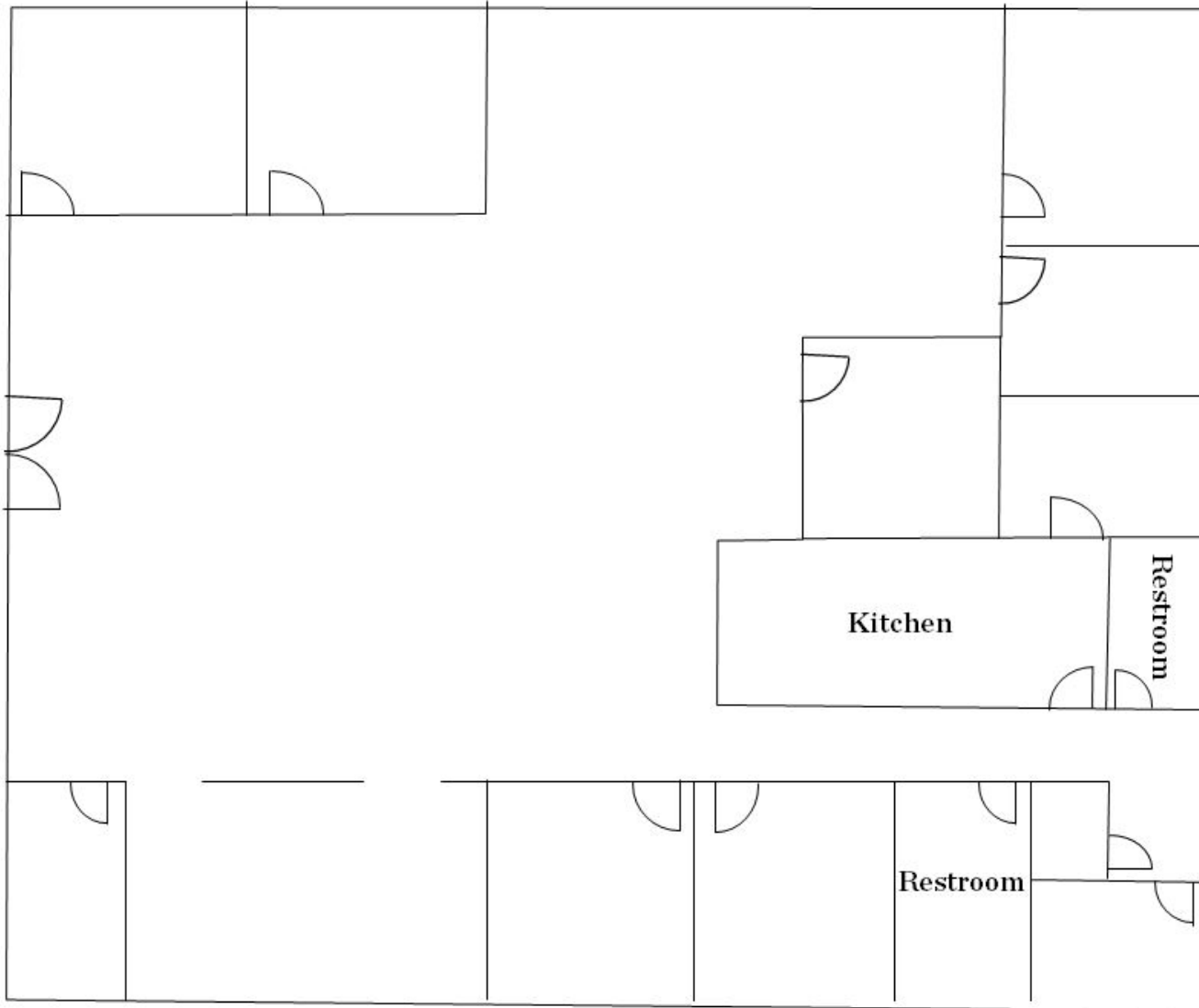


# For Lease

30 Town Center Parkway  
Santee, CA 92071



commercial  
facilities  
incorporated



## Floor Plan

- Suite A: 5,771 sf
- 7 offices, storage rooms, mail/copy area, kitchen and 2 private restrooms
- Flexible layout, can accommodate retail/office uses