

For Lease

1210 W. Morena Blvd.
San Diego, CA 92110



RARE OPPORTUNITY AVAILABLE JUNE 2019 Ground Floor +/- 20,470 RSF 2nd Floor Offices/Mezzanine +/- 7,300 RSF

- ▶ Currently occupied by Petco and Metro Décor (**DO NOT DISTURB TENANTS**)
- ▶ Adjacent to future Trolley Station – Tecolote Rd. Station being constructed now
- ▶ Convenient location with quick freeway access to Interstate 5 and Interstate 8
- ▶ 21-22 ft. clear span



Well located commercial property
along the Morena Blvd. District



For more information, please contact:

Rich Lee Senior Vice President Lic. #01389755 T: (858) 200-4265 rlee@cfisandiego.com	Mike Paeske Executive Vice President Lic. #01422680 T: (858) 200-4264 mikep@cfisandiego.com
---	---

CFI
Lic. #00288311
10951 Sorrento Valley Rd, 2A
San Diego, CA 92121
cfisandiego.com

The depiction in the included photograph of any person, entity, sign, logo or property, other than Commercial Facilities Incorporated's (CFI) client and the property offered by CFI, is incidental only, and is not intended to connote any affiliation, connection, association, sponsorship or approval by or between that which is incidentally depicted as CFI or its client. This listing shall not be deemed an offer to lease, sublease or sell such property; and, in the event of any transaction for such property, no commission shall be earned by or payable to any cooperating broker except if otherwise provided pursuant to the express terms, rates and conditions of CFI's agreement with its principal, if, as and when such commission (if any) is actually received from such principal.

For Lease

1210 W. Morena Blvd.
San Diego, CA 92110



commercial
facilities
incorporated



**Tecolote Trolley Station
under construction**

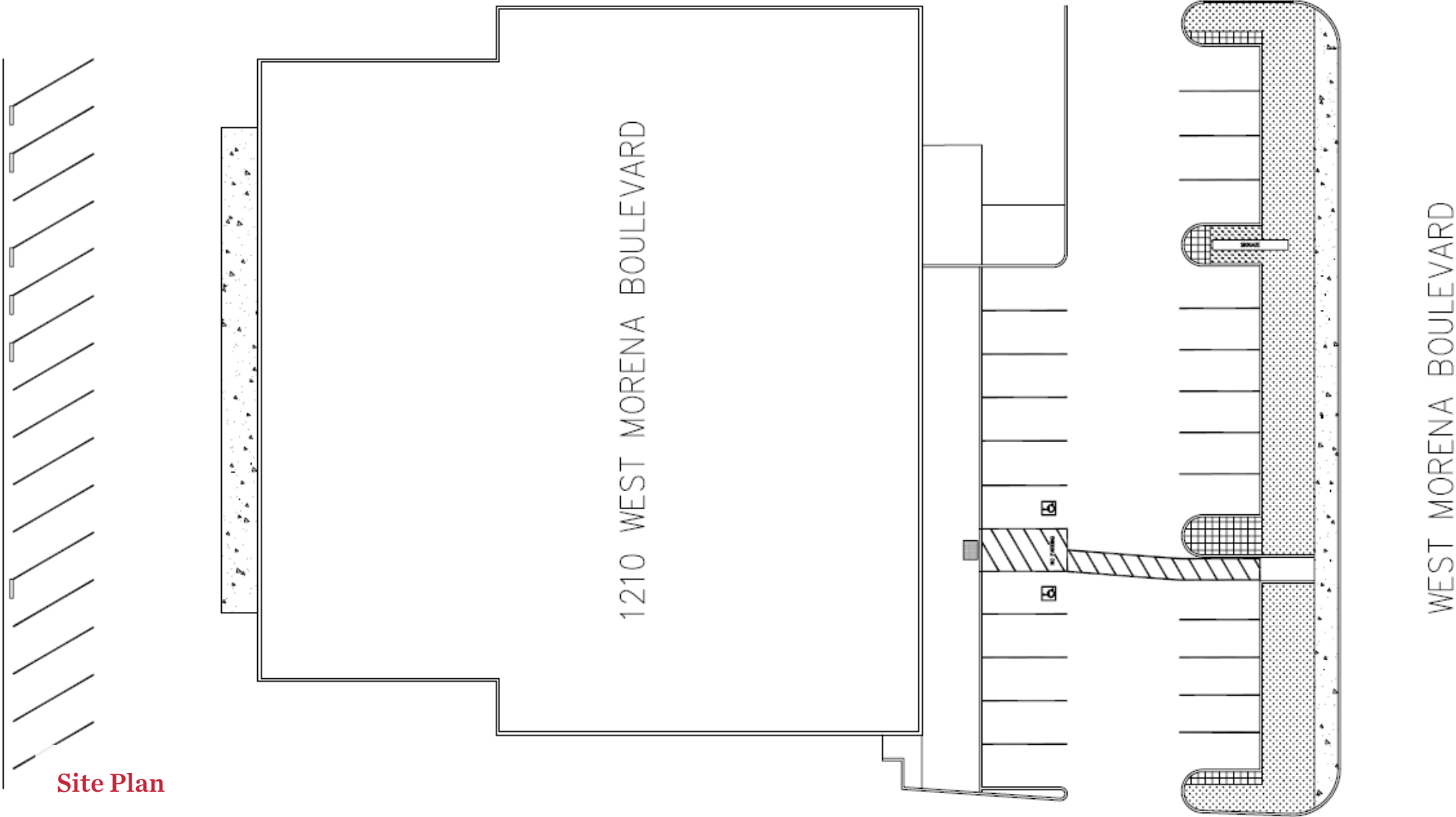
**Ground Floor +/- 20,470 RSF
2nd Floor +/- 7,300 RSF
Prime Location & Visibility**

For Lease

1210 W. Morena Blvd.
San Diego, CA 92110



commercial
facilities
incorporated



Site Plan

The depiction in the included photograph of any person, entity, sign, logo or property, other than Commercial Facilities Incorporated's (CFI) client and the property offered by CFI, is incidental only, and is not intended to connote any affiliation, connection, association, sponsorship or approval by or between that which is incidentally depicted as CFI or its client. This listing shall not be deemed an offer to lease, sublease or sell such property; and, in the event of any transaction for such property, no commission shall be earned by or payable to any cooperating broker except if otherwise provided pursuant to the express terms, rates and conditions of CFI's agreement with its principal, if, as and when such commission (if any) is actually received from such principal.